

Teeny-tiny home guide

Use this how-to, template and inventory of materials and tools to build your teeny-tiny home. We'd love to see the results! Share yours on Instagram by tagging @homestylemag @resenecolour #homestylereseneteenytinyhome.

WORDS, DESIGN & STYLING
Sam van Kan

You will need

- Your printed-out teeny-tiny home template — it's designed to be printed A0 size
- A ruler
- A pencil
- A craft knife
- A cutting mat
- Masking tape
- A bevel cutter
- 2 x 30 x 40-inch sheets of 10mm foam board
- Foam board glue
- Balsa wood glue
- Card stock (for the edging)
- 0.3mm frosted plastic (for the windows)
- 6.5mm and 5mm balsa wood (for the windows)
- 2.5mm, 5mm, 6.5mm and 8mm balsa wood (for the furniture and decorative objects)
- Air-dry clay (for the decorative objects and climbing wall)
- Wooden ring beads (for the outdoor plant pot).

Pieces A-Z (well, almost)

- A. Bunk room/living room floor
- B. Kitchen/living step
- C. Hallway step
- D. Dining/kitchen/hallway floor
- E. Bunk bed wall
- F. Hallway wall
- G. Side bunk bed wall
- H. Bottom bunk bed base
- I. Top bunk bed base
- J. Living room wall
- K. Living room partition
- L. Dining/kitchen wall
- M. Hallway/rock climbing wall
- N. Dining/kitchen partition
- O. Dining/kitchen partition
- P. Bathroom/patio wall
- Q. Bedroom/bathroom partition wall
- R. Bedroom/bathroom partition wall
- S. Dining/kitchen/hallway floor
- T. Bathroom side wall
- U. Bathroom front partition wall
- V. Roof
- W. Deck
- X. Feet under deck
- Y. Feet under deck.

How-to

1. Cut pieces A to Y from 10mm foam board, labelling each as you go with its corresponding letter and name using a pencil and pieces of masking tape.
2. To bevel the required edges, separate the pieces indicated by the darker grey lines on the template. Measure 10mm in from the edge of the foam board and draw a line down the board (this will line up with the dark grey stripe on the template). Hold the bevelling tool flat against the board with the blade at a 90-degree angle (the edge of the blade should line up with the already cut outside edge), then drag the blade down the board to cut a triangle out of the edge. Repeat this process with all pieces that require it: E, F, G, J, L, M, N, O, P, Q.
3. Make the windows according to the window instructions below, which begin at step 22.
4. Glue pieces B and C to piece A in the required spot, foam side down so the paper side faces out.
5. Glue piece D to pieces B and C. You can use scrap pieces of foam board to prop up the left-hand side of the floor to keep it straight for the meantime.
6. Place piece E bevelled edge down. Apply a strip of tape to each bevelled side, leaving half the width of tape hanging over the edge. Flip piece E front side down. Place piece F on the left-hand side front side down (bevelled side up) on the left-hand side of piece E, lining up the edges. Place piece G front side up on the right-hand side of piece E, lining up the edges.
7. Apply glue to front edge of piece I and line up with the base of piece E. Hold in place with a piece of tape. Apply glue to the front edge of piece H, line up with the marked spot and hold in place with a piece of tape.
8. Apply glue to the bevelled edges of piece E, as the sides of pieces H and I. Pull up piece F on the tape 'hinge' until the bevelled edges are flush. Do the same for piece G, and use a piece of tape across from F and G to hold it all together until the glue has dried.
9. Once dry, remove the tape from bunk bed. Apply fresh tape to the front face of piece F along the bevelled edge that's still free, leaving half the width hanging over the edge. Flip piece F front side down. Place piece J front side down (bevelled edge up) next to piece F, lining up the edges. Apply glue to the bevelled edge and flip up piece J on the tape 'hinge'. Hold in place with tape until it has dried, then remove the tape.
10. Apply glue to piece A along the marked area for pieces E to J. Line up the whole section of E to J with these marks and put in place, pushing down gently. If necessary, apply tape to hold in place while drying.
11. Apply glue to the bottom edge and sides of the living room window, line up with the edge of piece A and piece

J, and hold in place with tape. Apply glue to the bottom edge of piece K, line up with the edge of piece A and the window, and hold in place with tape. Apply glue to the bottom edge and the inside side of the bunk room window, line up with piece E/G, and hold in place with tape until dry.

12. Place piece L bevelled edge down. Apply a strip of tape to the bevelled side, leaving half the width of tape hanging over the edge. Flip piece L front side down. Place piece M front side down (bevelled side up) next to the bevelled edge of piece L, lining up the edges. Apply glue to the bevelled edge and pull piece M up on the tape 'hinge' until the bevel is flush. Use tape to hold in place until dry.

13. Place piece N bevelled edge down. Apply a strip of tape to the bevelled side, leaving half the width of tape hanging over the edge. Flip piece N front side down. Place piece O front side down (bevelled side up) next to the bevelled edge of piece N, lining up the edges. Apply glue to the bevelled edge and pull piece O up on the tape 'hinge' until the bevel is flush. Use tape to hold in place until dry.

14. Apply glue to the back edge and the hallway edge of piece D. Line piece L/M up with the bottom edge of piece D, and gently push into place. Use tape to hold in place until dry.

15. To complete the downstairs frame, apply glue to piece D along the marked area for piece N/O, and piece L in the marked area for piece N. Line piece N/O up with these marks and gently press in place. Hold with tape if needed.

16. Place piece P bevelled edge down. Apply a strip of tape to the bevelled side, leaving half the width of tape hanging over the edge. Flip piece P bevel side up. Place piece Q bevelled side up next to the bevelled edge of piece P, lining up the edges. Apply glue to the bevelled edge and pull piece Q up on the tape 'hinge' until the bevel is flush. Apply glue to one side of piece R and place this piece adjacent to piece Q, lining up the edges. Use tape to hold in place until dry.

17. Apply glue to piece S in the marked area for piece P/Q/R. Put piece P/Q/R in place, and apply tape to hold until dry. Apply glue to the sides and base of piece T, and put in place. Apply glue to the sides and base of the bathroom window and place on top of piece T, lining up the edges. Apply glue to the base of piece U, and put in place, lining up the edges. Use tape to hold in place until dry.

18. To complete the upstairs frame, apply glue to the base of the bedroom window. Line up with the edge of piece S and hold in place with tape until dry. Apply glue to the top edge of pieces P, Q, R, T, U and bedroom window. Line up piece V with the edge of piece T/U and press in place. Hold with tape until dry.

19. To attach upstairs to downstairs, apply glue to

all of the top edges of the downstairs frame, line up the upstairs with the edges and hold in place with tape until dry.

20. Apply glue to one side of piece X and Y. Line up with marks on piece W and tape in place until dry. Flip piece W right side up and slide under piece D, leaving an equal gap on the left side and the front.

21. Cut all paper edging pieces from the card stock. Apply double-sided tape to the wrong side (printed side) and trim to size. Working around the whole house, match up the edging pieces with the raw foam edges, and tape in place.

22. To make the windows, cut, bevel and score all the pieces according to the template and label them with tape to keep track of them.

23. Starting with the simple frame of the bathroom and bunk room windows, lay the top and bottom pieces bevel side down. Apply a strip of tape to each edge, leaving half the width hanging over the edge. Flip them bevel side up. Line up one side piece, bevel side up, with the left-hand side of the bottom piece, and stick to the tape. Line up the other side piece, bevel side up, with the right-hand side of the bottom piece, and stick to the tape. Line up the top piece with the left- or right-hand side, and stick to the tape. You should now have a row of sides all in a line.

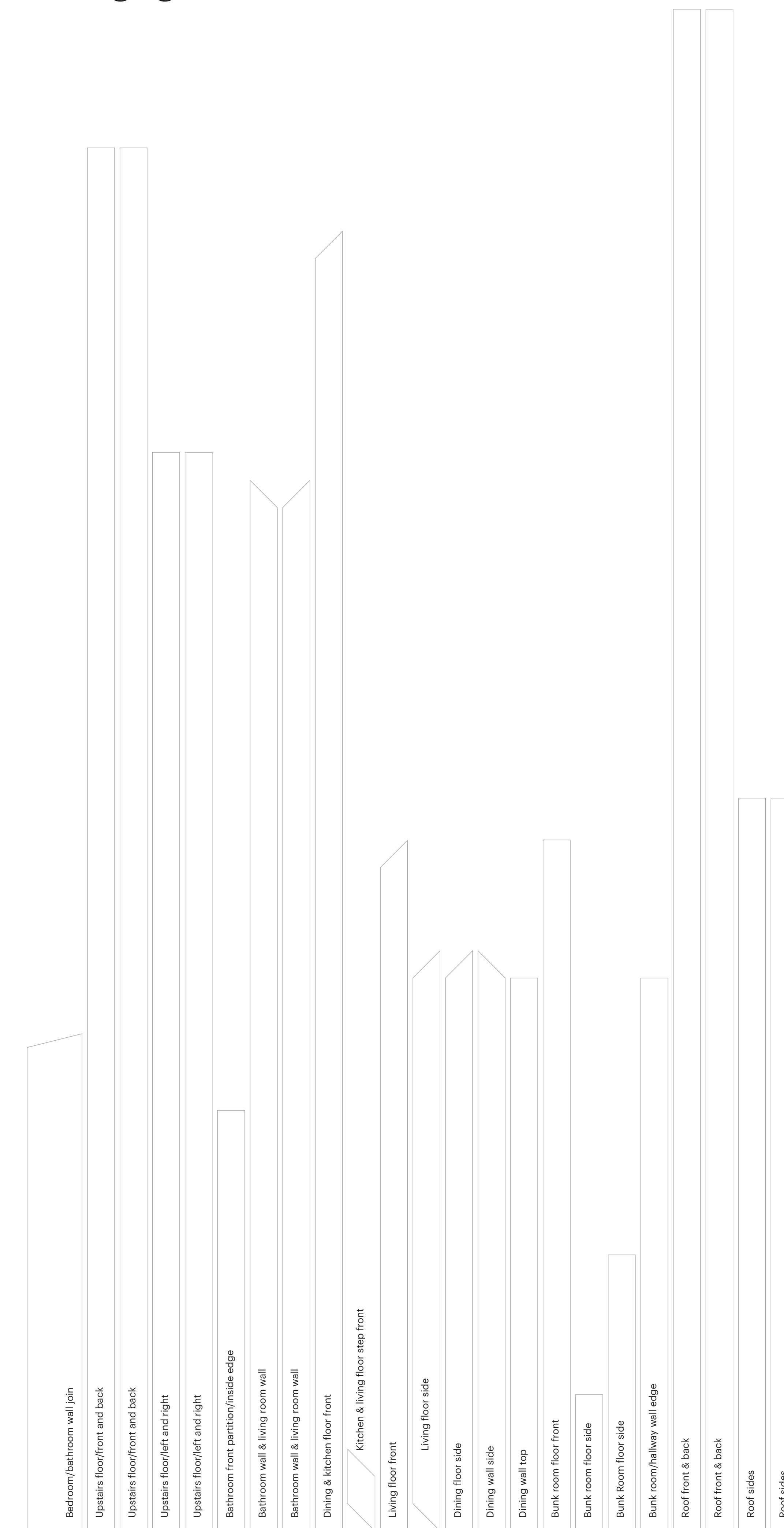
24. Apply a small amount of glue to each of the bevelled edges. Slide the insert into the score on the bottom piece. Pull up the left-hand side on the tape 'hinge' and slide the side of the insert into the bevel. Repeat for the right-hand side and, lastly, the top. Secure the final edge with tape to hold until dry.

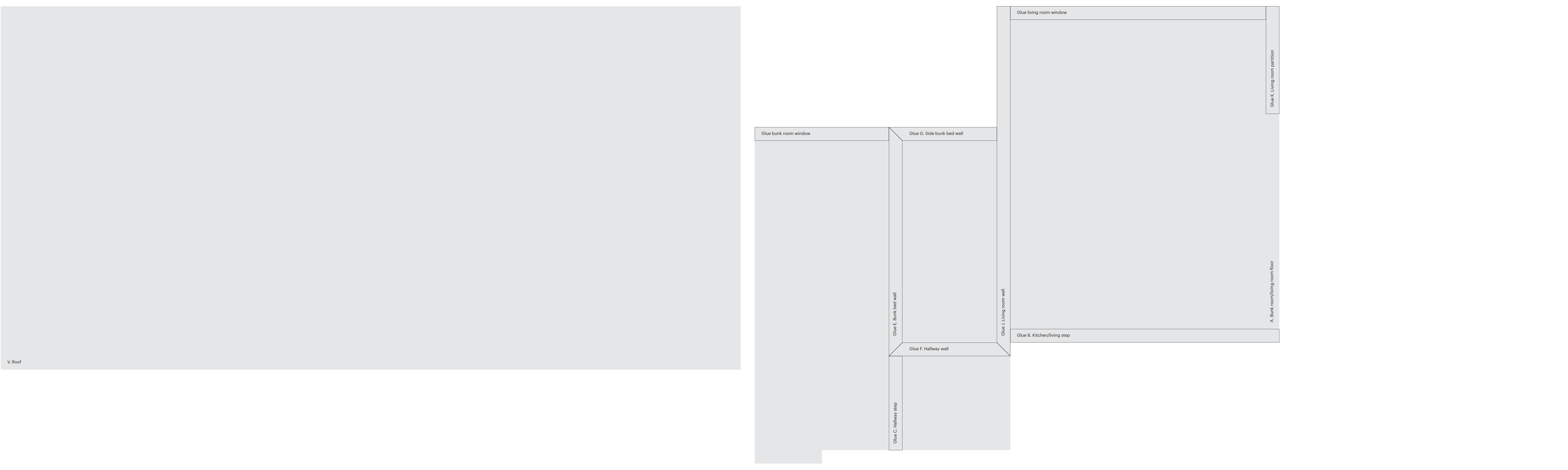
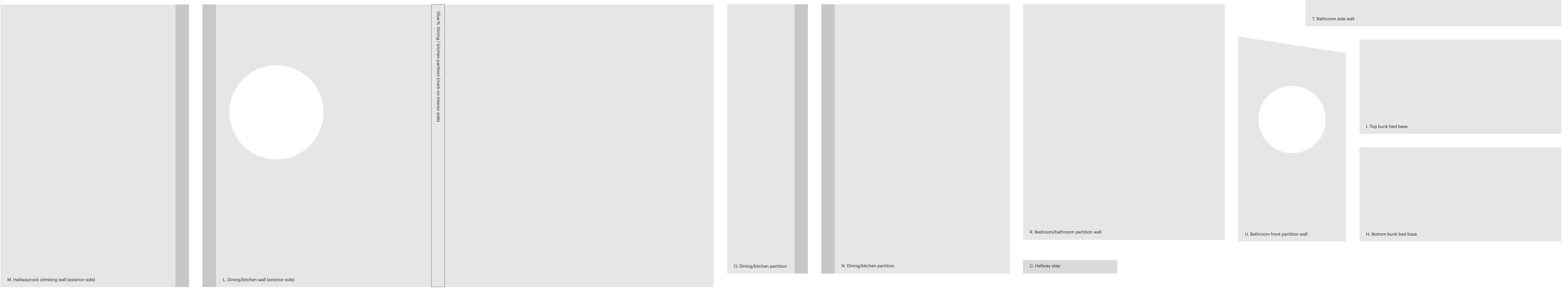
25. Repeat steps 23 and 24 to create the simple frame for the bedroom and living room windows. Once the main frame is together, lay the frame on the printed template. You should be able to see the lines as rough guides through the frosted plastic, but if not, you can measure and transfer the pattern directly to the plastic using a pencil to mark.

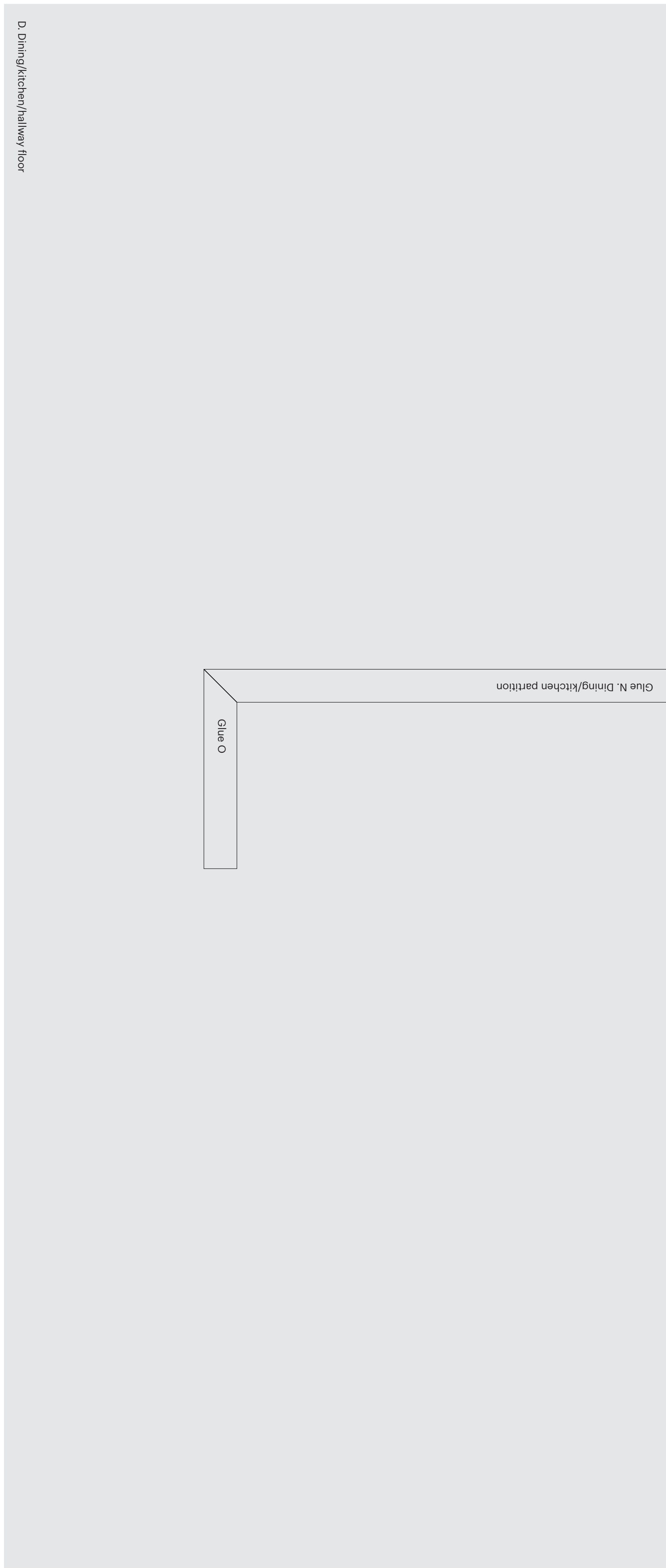
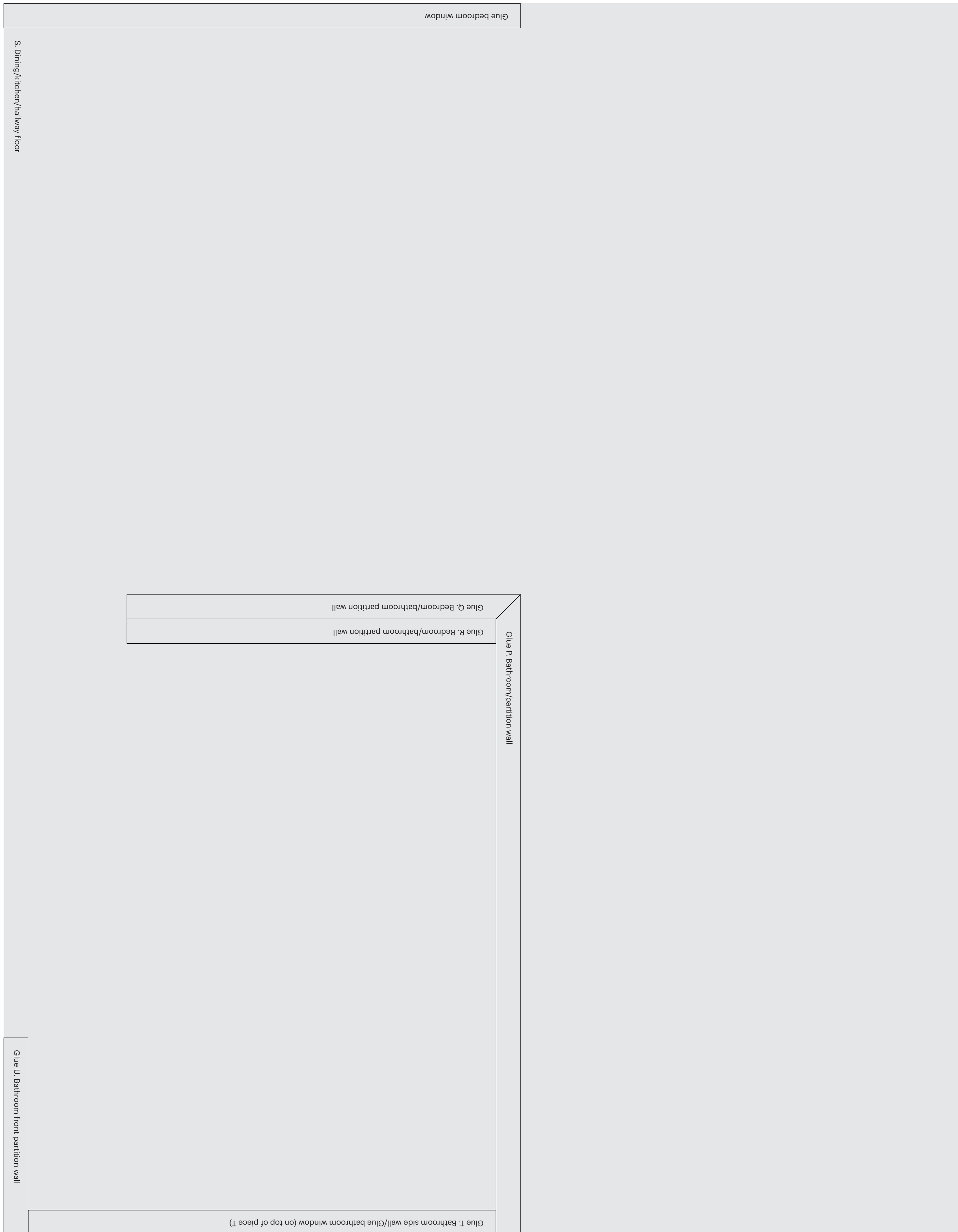
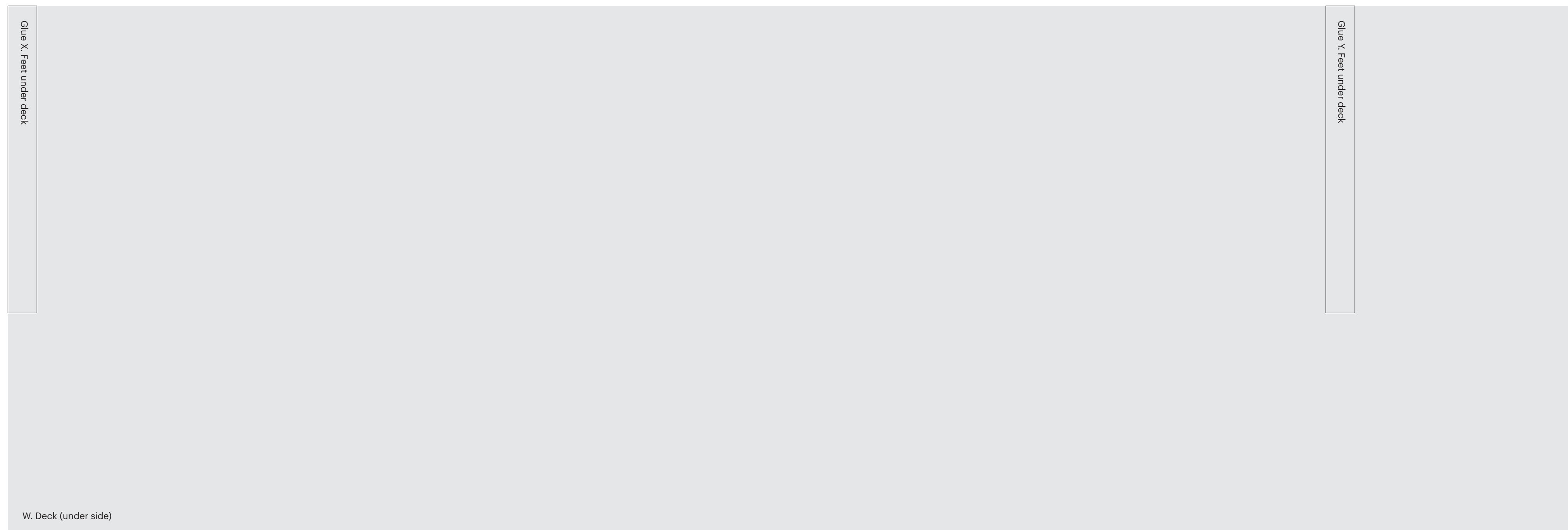
26. Starting on one side of the plastic with the vertical window panes, apply a small amount of glue down the length of the pane. Line up with the marks or template and gently push into place. Repeat for the other 3 vertical panes on this side. Next, apply a small amount of glue down the length of a horizontal window pane, line up with the marks or template and gently push into place. Repeat for the other 4 horizontal panes on this side. Set to one side and allow to dry while doing the same to the other window.

27. Once one side is dry, flip the windows over. Repeat the process above using the already glued panes as a guide. You're essentially sandwiching the plastic between the balsa wood panes so they look like individually inset windows.

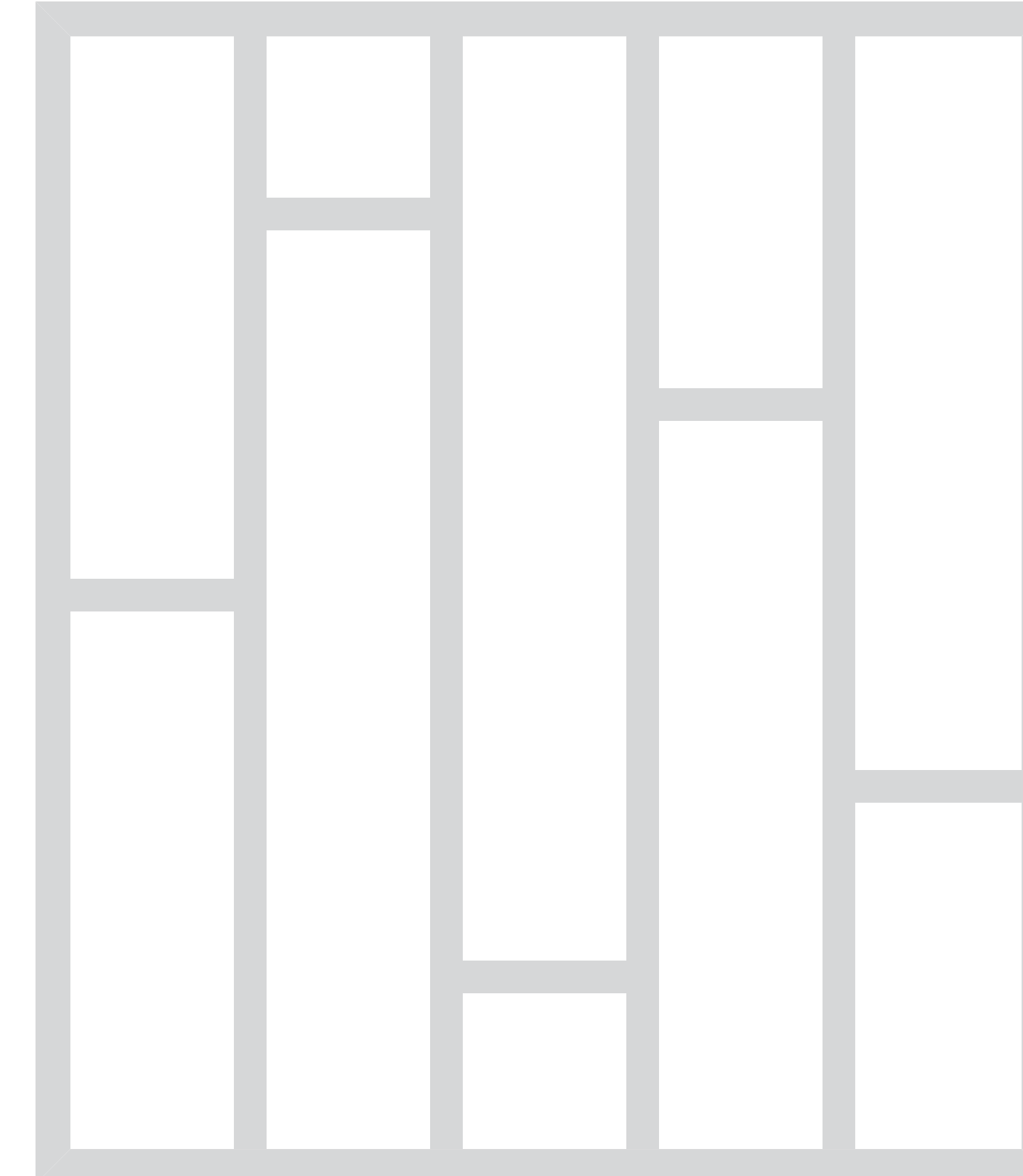
Edging







Living room window template



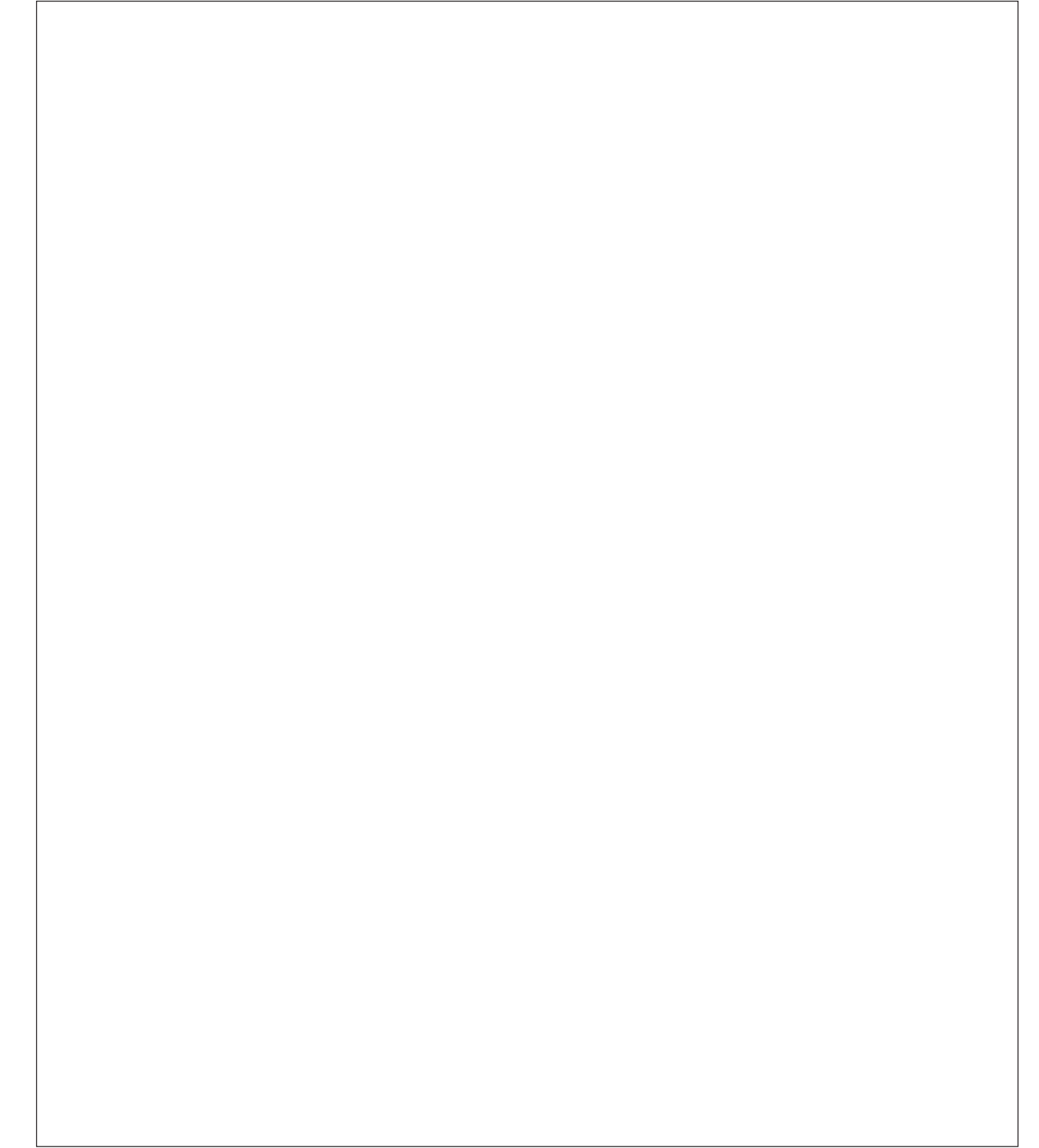
Top and bottom | 6.5mm balsa • 10mm x 190mm • Cut x 2 • Bevel on each end 6.5mm • Score down centre 1mm deep

Sides | 6.5mm balsa • 10mm x 220mm • Cut x 2 • Bevel on each end 6.5mm • Score down centre 1mm deep

Vertical window panes | 5mm balsa • 6mm x 207mm • Cut x 8

Horizontal window panes | 5mm balsa • 6mm x 30.5mm • Cut x 10

Insert | 0.3mm frosted plastic • 180mm x 210mm • Cut x 1



Bedroom window template

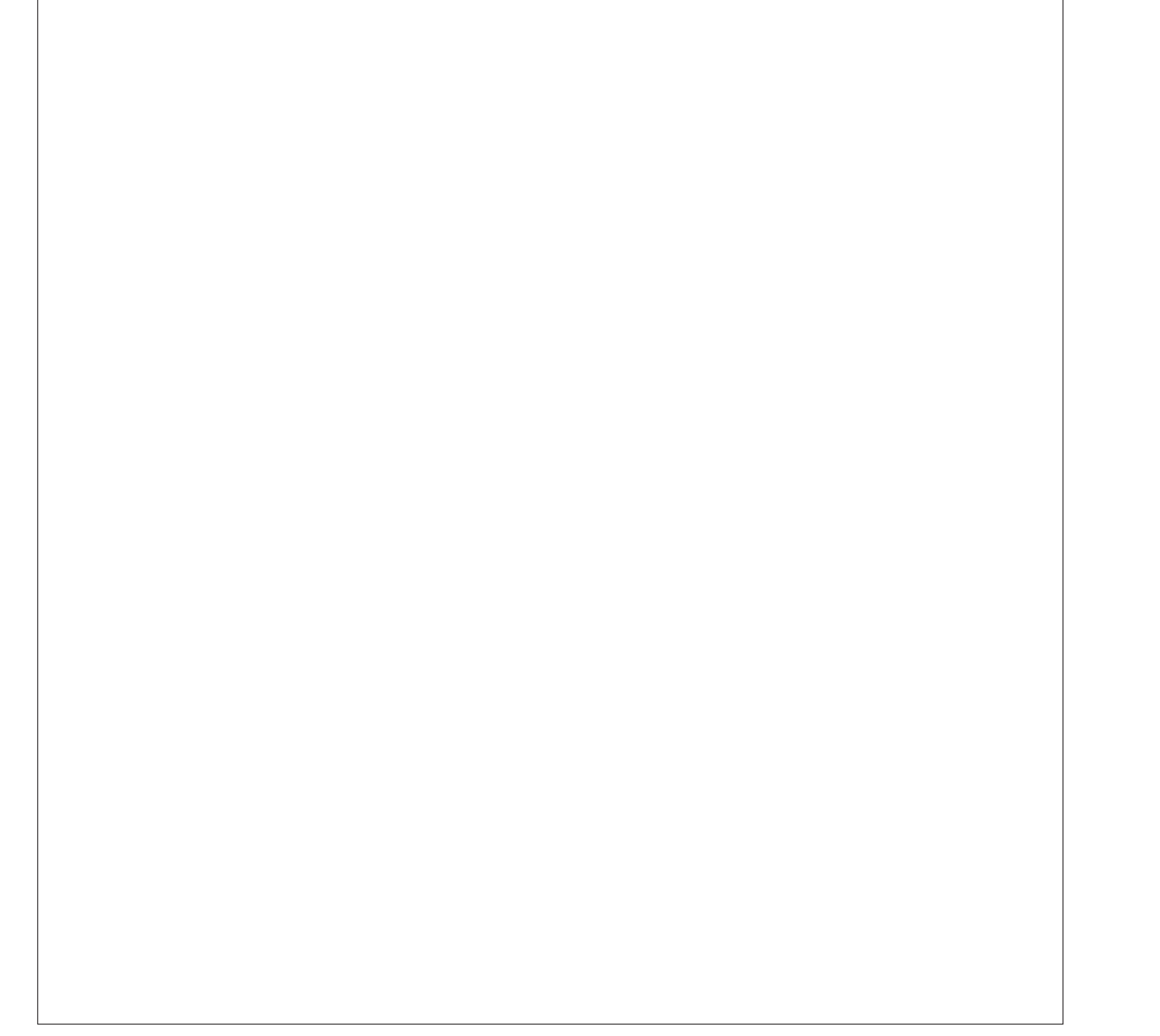


All sides | 6.5mm balsa • 10mm x 210mm • cut x 4 • Bevel on each end 6.5mm • Score down centre 1mm deep

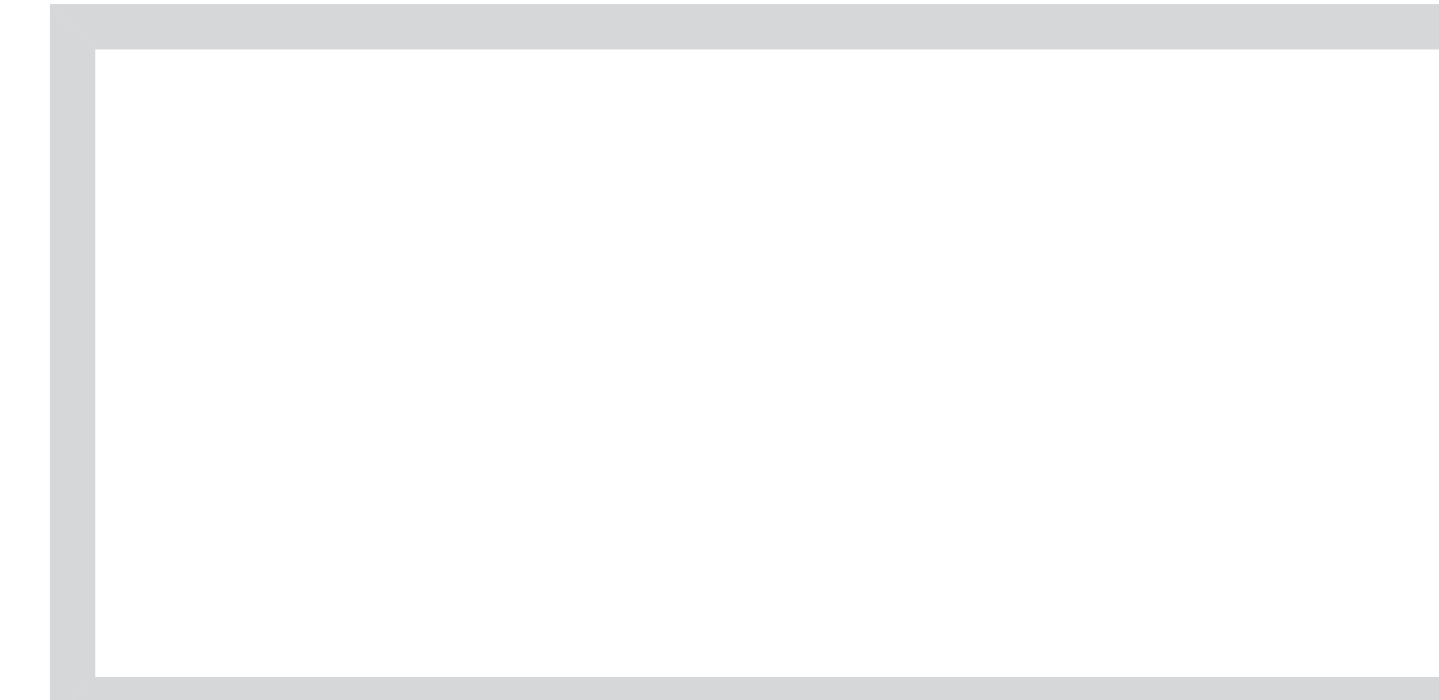
Vertical window panes | 5mm balsa • 6mm x 197mm • Cut x 8

Horizontal window panes | 5mm balsa • 6mm x 34.5mm • Cut x 10

Insert | 0.3mm frosted plastic • 200mm x 200mm • Cut x 1



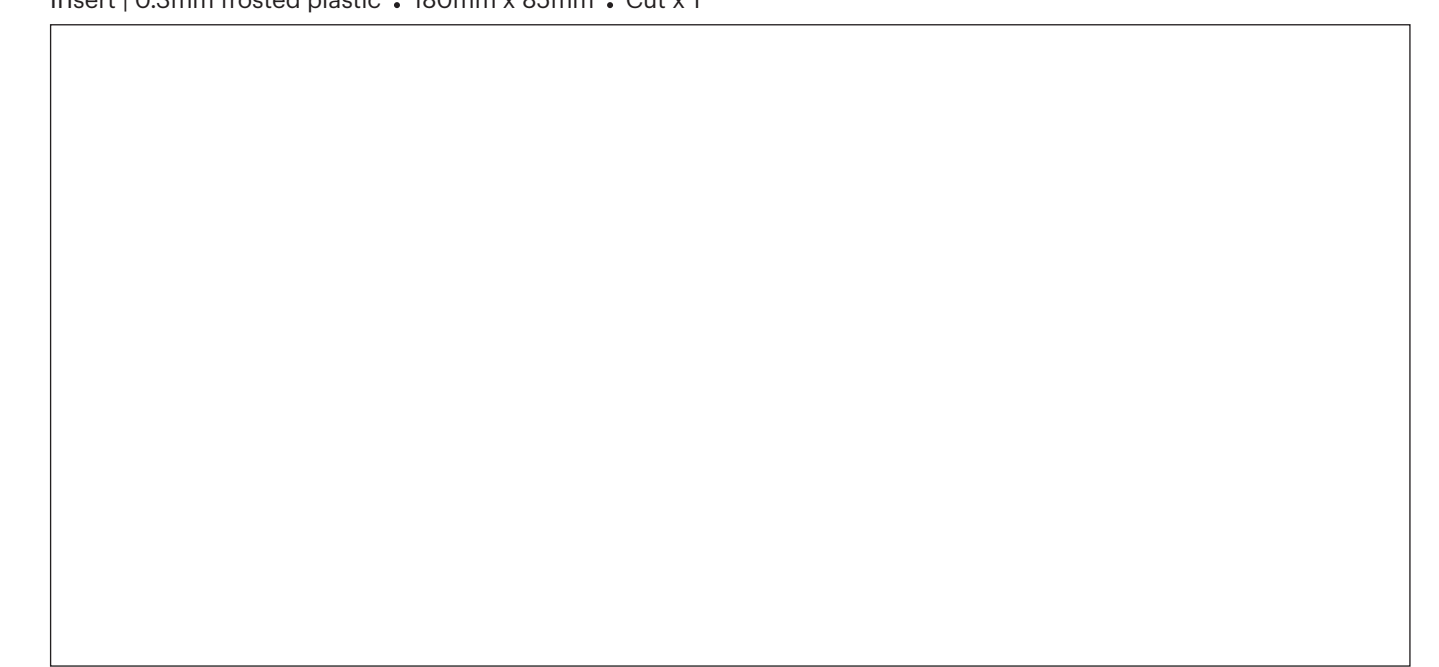
Bathroom window template



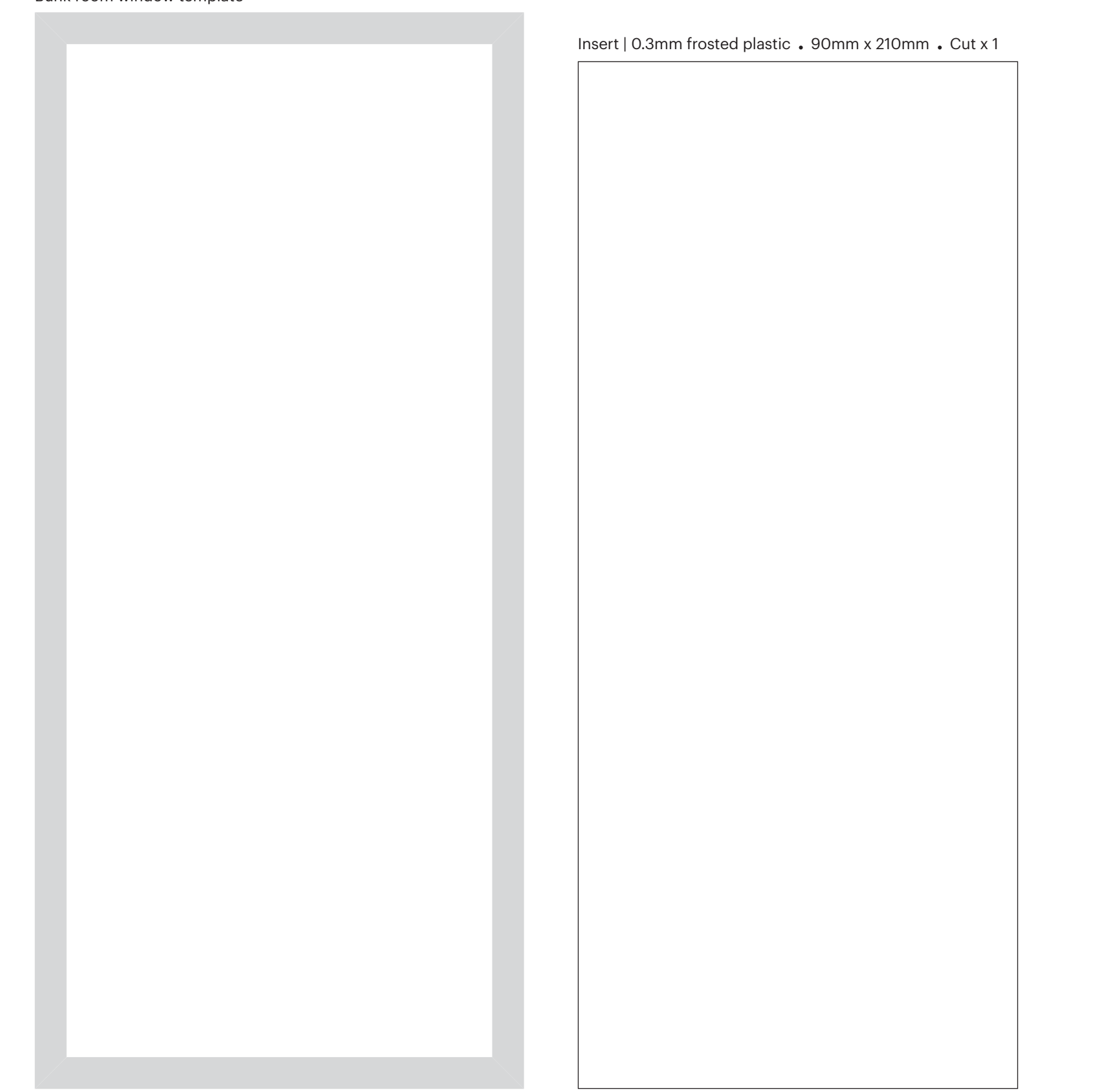
Top and bottom | 6.5mm balsa • 10mm x 190mm • Cut x 2 • Bevel on each end 6.5mm • Score down centre 1mm deep

Sides | 6.5mm balsa • 10mm x 95mm • Cut x 2 • Bevel on each end 6.5mm • Score down centre 1mm deep

Insert | 0.3mm frosted plastic • 180mm x 85mm • Cut x 1



Bunk room window template



Insert | 0.3mm frosted plastic • 90mm x 210mm • Cut x 1

Top and bottom | 6.5mm balsa • 10mm x 100mm • Cut x 2 • Bevel on each end 6.5mm • Score down centre 1mm deep

Sides | 6.5mm balsa • 10mm x 220mm • Cut x 2 • Bevel on each end 6.5mm • Score down centre 1mm deep